



Coach drop off on **Gateway Boulevard** near the entrance of Ocean Terminal Car Park



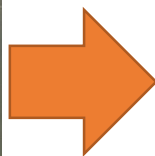


When you enter the glass doors, turn left for the stairs. Then, turn left for the escalators.





Go up two floors with the escalators. Then you will see stairs to pathway to the Ocean Terminal.





You will see BLT Burger on your right. Follow through and turn right to the direction to LCX.



Paper Moon

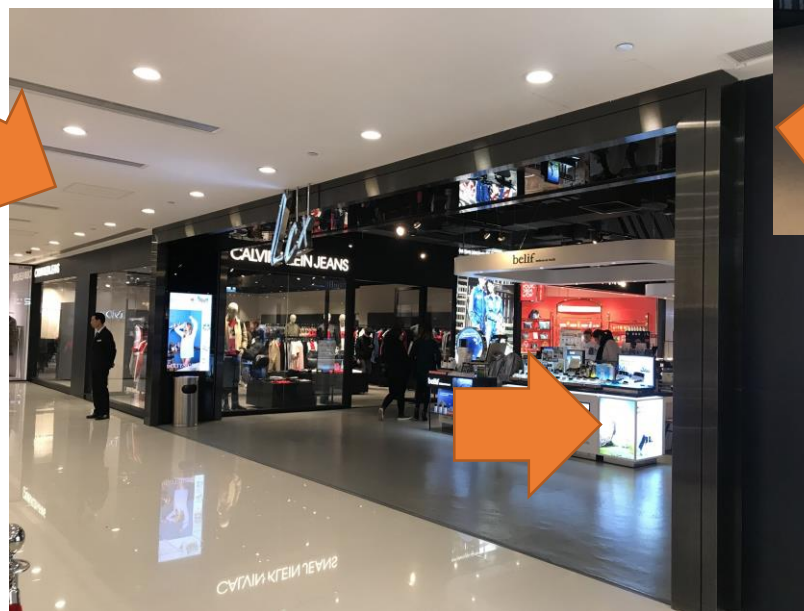


And you will see Ocean Terminal Extension at the end. Paper Moon will be on your left.



Walk through LCX.

Go all the way straight and you will see LCX entrance at the end.



Address: Shop OTE 301, Level 3,
Ocean Terminal, Harbour City, Tsim
Sha Tsui, Kowloon